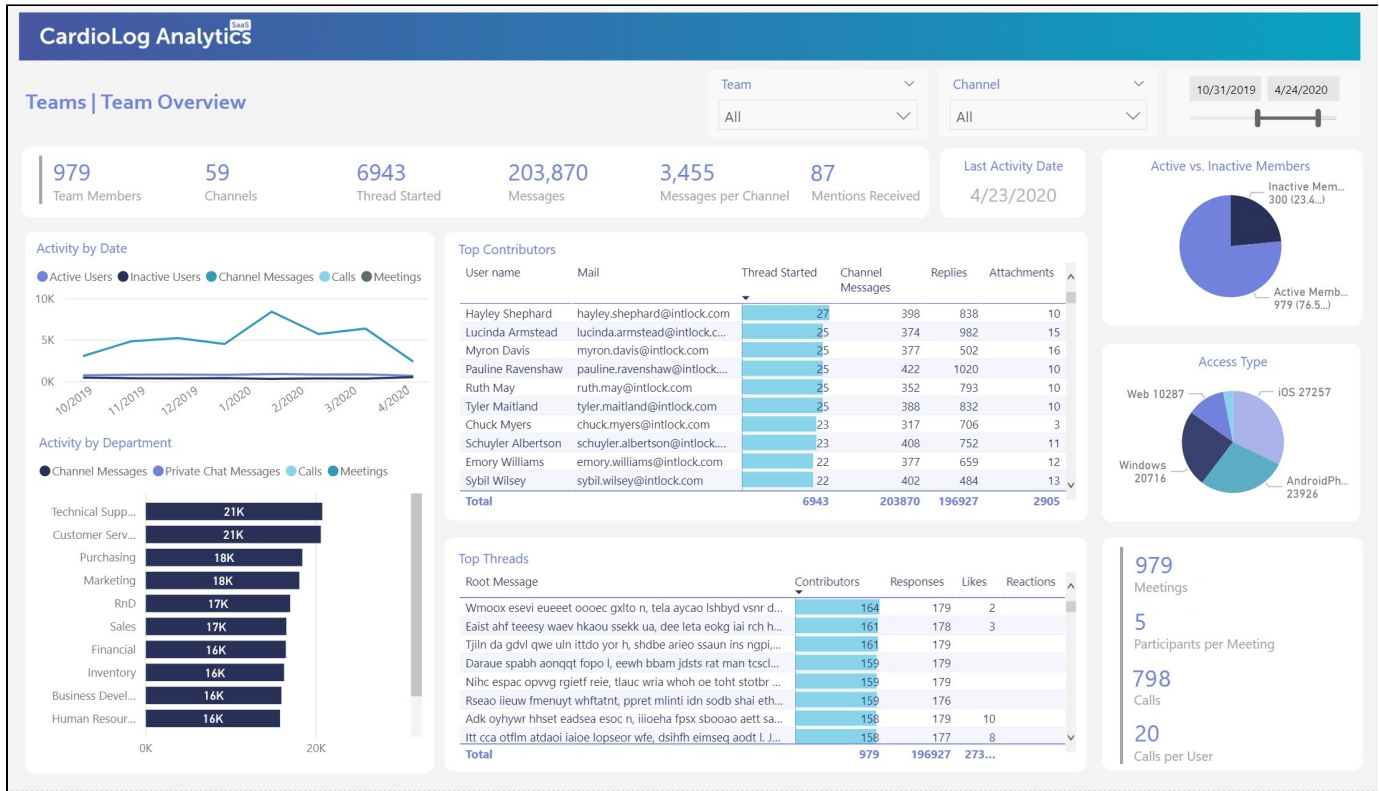


Teams - Team Overview

The Team Overview report highlights the activity within a specific team, including the number of members, channels and messages, and the top contributors and popular threads. It contains several visuals, ready to be quickly filtered by team and date, so you can quickly see how users in your team are using the platform to communicate and collaborate.



Teams | Team Overview

Team Members

The number of team members.

Channels

The number of channels in the selected team.

Thread Started

The number of conversations started in team channels during the selected date range.

Messages

The total number of messages and replies that the team's users posted in the selected team channels during the selected date range.

Messages per Channel

The average number of messages per channel in the selected team during the selected date range.

Mentions Received

The number of times the selected team was mentioned during the selected date range.

Activity by Date

This chart compares the number of active users, inactive users, messages, calls and meetings over the selected date range.

Activity by Department

This chart includes a breakdown of how many channel messages, private chat messages, calls and meetings users have created according to their department, over the selected date range.

Active vs. Inactive Members

This visual indicates the ratio of unique users who performed an action in a Team (posted a message in a channel, participated in calls or meetings) to those who haven't, during the selected date range.

Access Type

This pie chart details the amount of times each device was used to connect to Teams.

- Web - The user was active on the Teams web client.
- Windows - The user was active in the Teams desktop client on a Windows-based computer.
- Mac - The user was active in the Teams desktop client on a macOS computer.
- Linux - The user was active in the Teams desktop client on a Linux computer.
- iOS - The user was active on the Teams mobile client for iOS.
- Android phone - The user was active on the Teams mobile client for Android.

Meetings

The total number of meetings scheduled by team members within the selected date range.

Participants per Meeting

The average number of participants per meeting during the selected date range.

Calls

The total number of calls that team members participated in within the selected date range.

Calls per User

The average number of calls per user during the selected date range.

Top Contributors

This table visual displays the top contributors ranked by the number of threads started (a contributor is a user who created at least one message). It includes the following columns:

- User name - The display name of the user.
- Mail - The email address of the user.
- Threads Started - The number of conversations started by the listed user during the selected date range.
- Channel Messages - The number of messages that the listed user posted in team channels during the selected date range.
- Replies - The number of the reply messages that the listed user posted in team channels during the selected date range.
- Attachments - The number of attachments that the listed user posted in team channels during the selected date range.

Top Threads

This table visual displays the top threads ranked by the number of contributors. It includes the following columns:

- Root Message - The first message of the listed thread.
- Responders - The number of users who posted at least one reply in the listed thread during the selected date range.
- Responses - The number of replies in the listed thread during the selected date range.
- Likes - The number of likes for the listed thread (and all replies) during the selected date range.
- Reactions - The number of reactions to the listed thread (and all replies) during the selected date range.

Filters: Team, Channel, Date