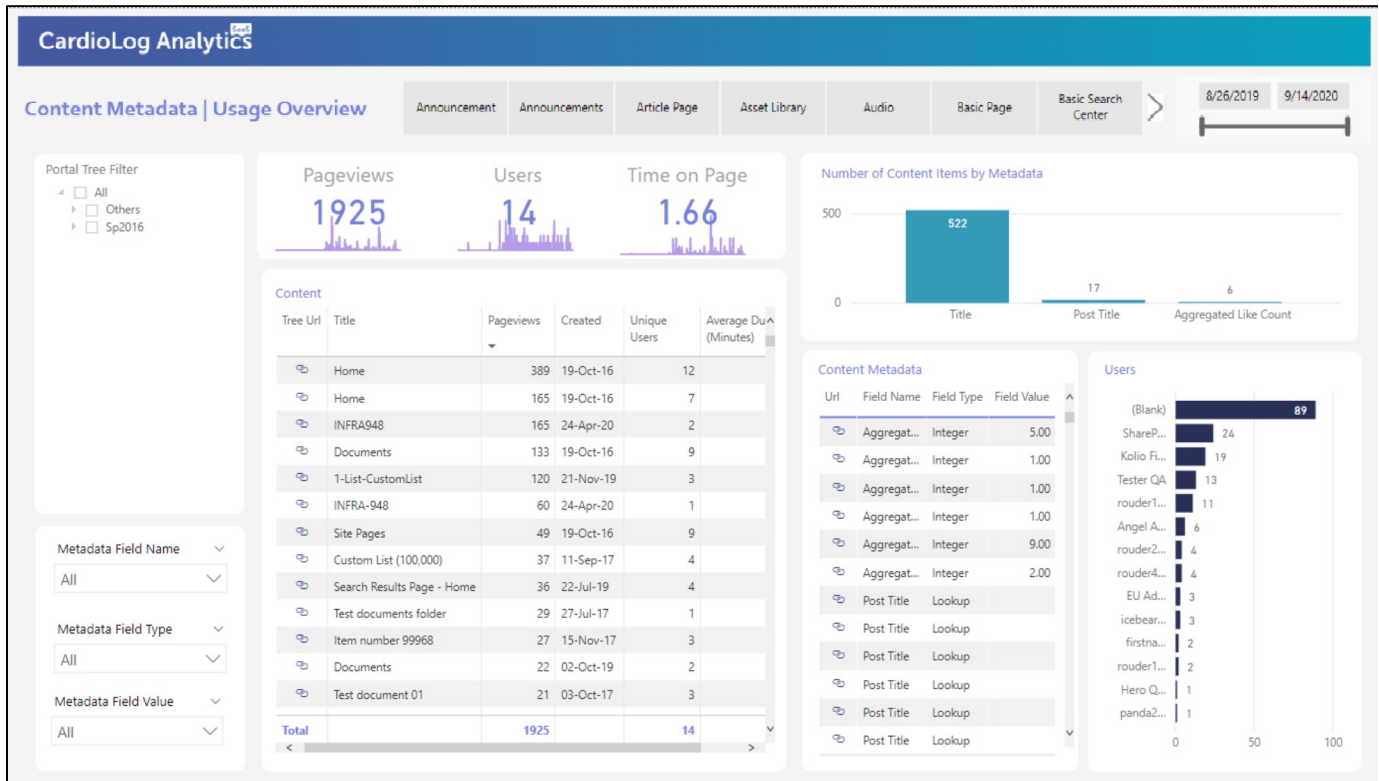


SharePoint - Content Metadata

CardioLog Analytics SaaS is familiar with the content of your site, and allows you to report on content metadata, giving you greater control and flexibility when it comes to analyzing your data.



Content Metadata | Usage Overview

Widgets

Pageviews

This widget identifies the total number of pageviews by all users within the selected time range. The line graph in the background indicates trends in pageviews over time.

Users

This widget identifies the total number of unique users who have visited your site within the selected time range. The line graph in the background indicates trends in the volume of users over time.

Time on Page

This is the average time spent on viewing each page by any user, measured in minutes. The line graph in the background indicates trends in the viewing duration over time.

Number of Content Items by Metadata

This chart displays the number of content items tagged with each metadata field. Drill down to a specific metadata field to see a breakdown of the selected metadata field values.

Content

This table lists the most popular content items, ranked by the number of pageviews. It includes the following columns:

- Tree URL - Provides a direct link to the listed page
- Page Title - The name of the relevant page
- Pageviews - The total number of pageviews for the listed page during the currently selected time range
- Owner - The username or identifier of the owner of the page
- Unique Users - The total number of users who viewed the page during the currently selected time range
- Average Duration (Minutes) - The average amount of time in minutes that users viewed the listed page at once

Content Metadata

Use this table to see the metadata field values for a specific content item, when selected in the **Content** table visual or in the **Portal Tree** Filter. It includes the following columns:

- Url - Content item URL
- Field Name - Metadata field name
- Field Type - Metadata field type, i.e. text, number, multi-value etc.
- Field Value - Metadata field value

Users

Use this chart to see the users who accessed a specific content item, when selected in the **Content** table visual or in the **Portal Tree** Filter.

Filters

Portal Tree

Use this filter to navigate through your portal and simply check the box next to any page or level to review information for exclusively that selection.

Metadata Field Name

Use this filter to navigate through your metadata fields and simply select any metadata field to review information for exclusively that selection.

Metadata Field Type

Use this filter to navigate through your metadata field types and simply select any metadata field type to review information for exclusively that selection.

Metadata Field Value

Use this filter to navigate through your metadata field values and simply select any metadata field value to review information for exclusively that selection.

Date

Use the date slider to quickly change the start or end date that you would like review information for. If you'd like to choose a specific date, click either the start or end date and manually select it using the calendar popup.