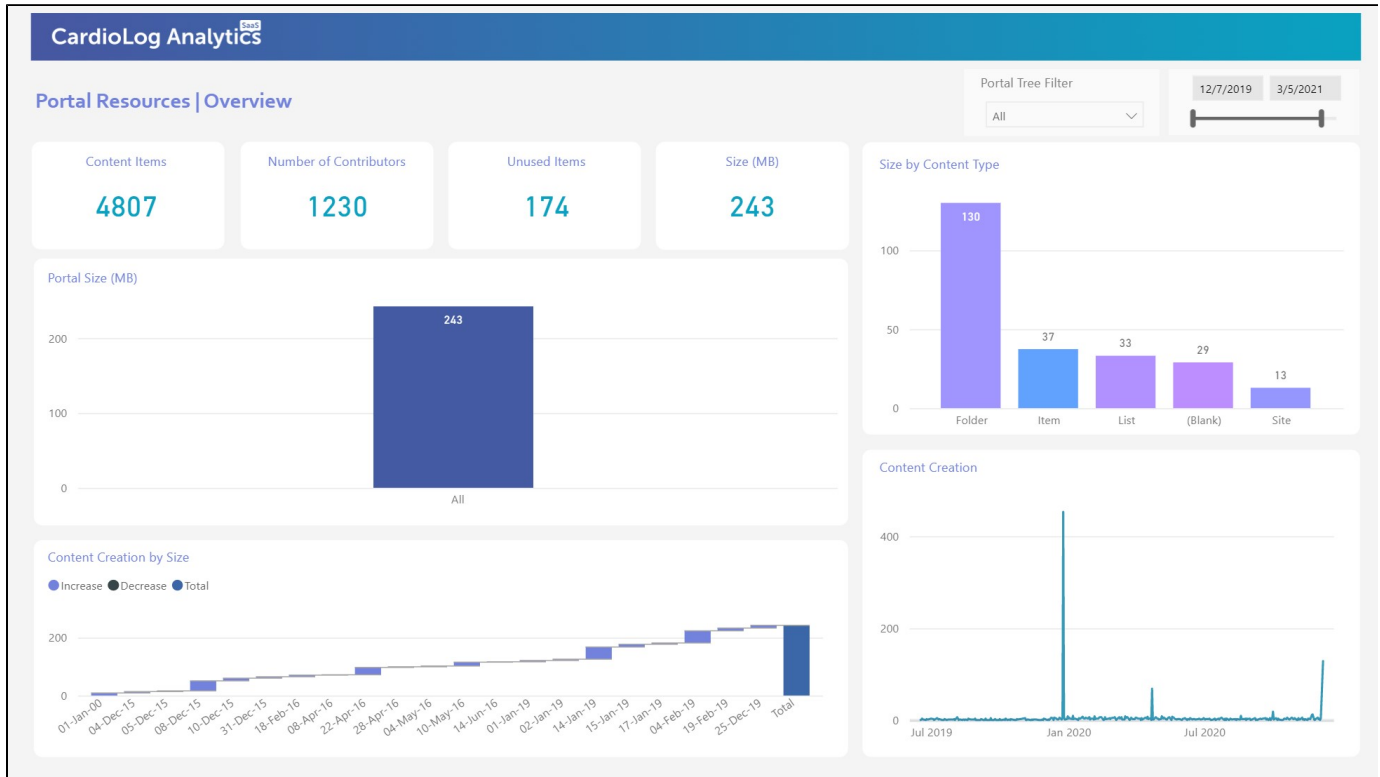


# Portal Resources - Overview

The Portal Resources report includes a collection of widgets that allow you to understand trends in the size and volume of content on your site.



Portal Resources | Overview

## Widgets

### Number of Content Items

This is the total amount of content items that are currently in your SharePoint portal. A content item is any SharePoint content item with a unique URL address such as site collections, sites, lists, list items, documents etc.

### Number of Contributors

This is the total number of users that have created content in your SharePoint portal.

### Number of Unused Items

This is the total number of items that have not been opened or downloaded during the currently selected time range.

### Size (MB)

This is the combined size of all items in your portal in MB.

### Portal Size by Level

This chart displays the total size of content items by tree level. You can drill up or down to move through each level in your SharePoint portal tree structure.

## **Size by Content Type**

This chart displays the total size of content items of each SharePoint content type.

## **Content Creation by Date**

This line chart displays the number of content items created over the selected time range.

## **Content Creation by Size**

This line chart displays the total size of content items created over the selected time range.

## **Filters**

### **Portal Tree**

Use this filter to navigate through your portal and simply check the box next to any page or level to review information for exclusively that selection.

### **Date**

Use the date slider to quickly change the start or end date that you would like review information for. If you'd like to choose a specific date, click either the start or end date and manually select it using the calendar popup.