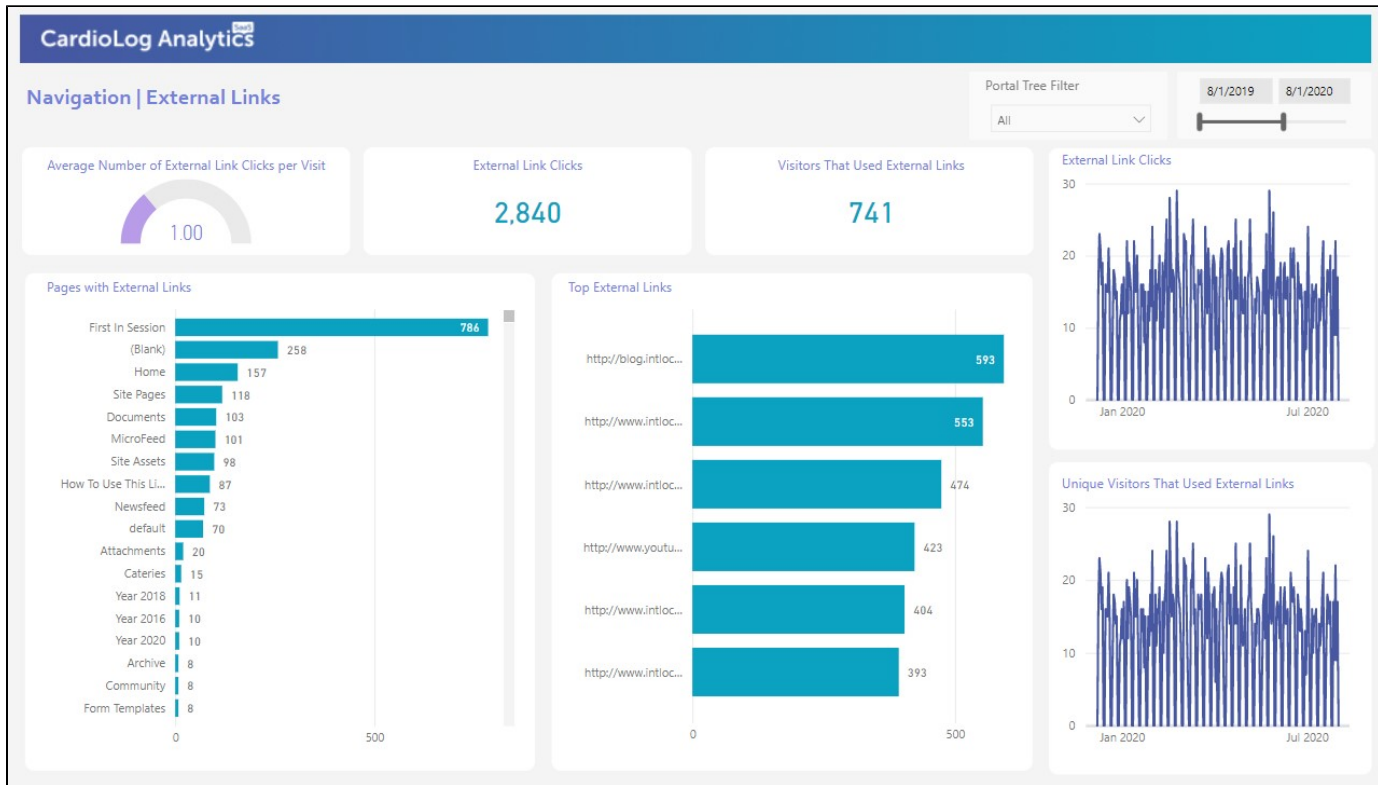


Navigation - External Links

The External Links report includes information about clicks on links that lead away from your portal to external applications and resources, also known as outbound links.

A link is defined as external if its domain in the URL differs from the domain of the visited page.



Navigation | External Links report

Widgets

External Link Clicks

This widget identifies the total number of clicks on links with URLs that are not in the site's subdomain within the selected time range. The line graph indicates trends in external link clicks over time.

Average Number of External Link Clicks per Visit

This is the average number of external link clicks per visit by all users within the selected time range.

Visitors that used External Links

This widget identifies the total number of unique users who have clicked on external links within the selected time range. The line graph indicates trends in the volume of users over time.

Pages with External Links

This bar graph lists the top pages that have external links in them, ranked by the number of external link clicks. Click on a specific page to see a breakdown of the external links that were clicked from it in the **Top External Links** widget.

Top External Links

This bar graph lists the top external links that were accessed from your site during the selected time frame, ranked by the number of clicks.

Filters

Portal Tree

Use this filter to navigate through your portal and simply check the box next to any page or level to review information for exclusively that selection.

Date

Use the date slider to quickly change the start or end date that you would like review information for. If you'd like to choose a specific date, click either the start or end date and manually select it using the calendar popup.