

# Configuring Usage Tracking and Reporting for SharePoint On-Premise

## Contents

- Running the Configuration Wizard
  - Configuring the CardioLog Analytics Tracking Code
    - Deploying the 'CardioLog Analytics' SharePoint Feature
    - Automatically Add the JavaScript Tracking Code
    - Manually Add a JavaScript Tracking Code
  - Configuring the SharePoint On-Premise Tree Structure

## Running the Configuration Wizard

Upon activating CardioLog, the Configuration Wizard will be displayed. This wizard will help you configure the **SharePoint Tracking Agent**, a tool designed to monitor visitor behavior in SharePoint, and the **SharePoint Adaptor**, which configures the structure for your SharePoint portal. Additionally you can start the wizard at any time to reconfigure your system by going Administration in the navigation pane and opening **System Configuration**. Select **Configuration Wizard** to initialize the system.

Login to the CardioLog server with your CardioLog service account and verify that it has the [required permissions](#) before running the wizard.

Please review this entire section before running the Configuration Wizard in order to determine the tracking mechanism that should be deployed. If you choose to deploy The CardioLog Analytics SharePoint feature, the wizard should run with SharePoint administrator privileges.

1. Launch **CardioLog**.
2. In the **Welcome** dialog, select the desired interface language and date format, and your SharePoint version, then click **Next**.

**Configuration Wizard**

**Step 1** Welcome

**Welcome**

This wizard will help you configure undefined.

**Language and Date Format:**

English - United States

**SharePoint Version:**

- SharePoint Online
- SharePoint 2016
- SharePoint 2013 / SharePoint Foundation 2013
- SharePoint 2010 / SharePoint Foundation 2010
- SharePoint 2007 / WSS 3.0
- SharePoint 2003 / WSS 2.0

Cancel < Back Next >

Configuration Wizard Step 1

3. Step 2 of the Configuration Wizard, **Usage Tracking**, can be performed either automatically or manually. Please select only one option to configure the Tracking Agent.

(1) Automatically add the JavaScript tracking code to all SharePoint pages served by the WFEs by deploying the CardioLog tracking code through a SharePoint solution.

(2) Automatically add the JavaScript tracking code to all SharePoint pages served by the WFEs by adding the tracking code to init.js in SharePoint 2010/13/16/19, and core.js in SharePoint 2007 (recommended for test environments only).

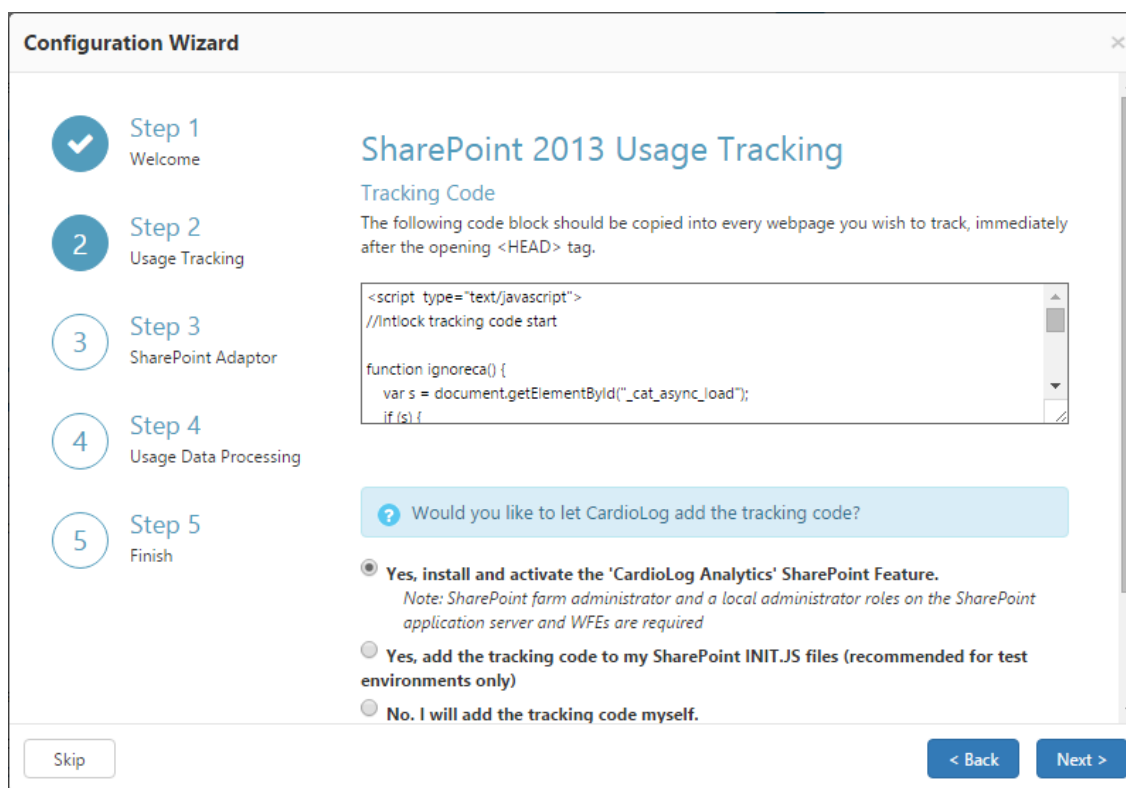
(3) Manually add the JavaScript tracking code.

#### (1) Deploying the 'CardioLog Analytics' SharePoint Feature

CardioLog provides a streamlined solution (cardiologtrackingagentfeature.wsp) for installing the JavaScript tracking code on all of your SharePoint farm pages. This SharePoint solution includes a farm-scoped feature named CardioLog Analytics, which can be activated or deactivated using SharePoint's Central Administration.

**Note:** Confirm that you have administrator permissions for your SharePoint farm, SharePoint application server and Web Front End server before configuring your servers.

- i. In the **Usage Tracking** dialog, select "Yes, install and activate CardioLog Analytics SharePoint Feature" and enter the SharePoint application server machine name:



#### Step 2 - Usage Tracking


- ii. Click **Next** to continue.
- iii. Wait while the wizard installs the cardiologtrackingagentfeature.wsp solution file, deploys the solution throughout all web front ends, and activates the CardioLog Analytics feature. If this step fails, please see "[CardioLog Analytics](#)" SharePoint Feature Manual Installation Procedure.

**Configuration Wizard** ×

- ✓ **Step 1**  
Welcome
- 2 **Step 2**  
Usage Tracking
- 3 **Step 3**  
SharePoint Adaptor
- 4 **Step 4**  
Usage Data Processing
- 5 **Step 5**  
Finish

## SharePoint 2013 Usage Tracking

Installing the CardioLog Tracking Agent. This might take several minutes...



Skip< BackNext >

*Configuration Wizard Step 2 Installation*

To confirm the solution has deployed properly, navigate to **SharePoint Central Administration > System Settings > Manage farm solutions**

*SharePoint Central Administration - Solution Management*

In the Solution Properties window, click **cardiologtrackingagentfeature.wsp** and verify that the solution was successfully deployed to all web front ends.

---

*SharePoint Central Administration - Solution Properties*

To view the deployed solution in **SharePoint 2010**, go to **Central Administration > System Settings > Manage farm solutions**

*SharePoint 2010 - Solution Management*

In the Solution Properties window, click **cardiologtrackingagentfeature.wsp** and verify that the solution was successfully deployed to all web front ends.

*SharePoint 2010 - Solution Properties*

To view the deployed solution in **MOSS 2007**, go to **Central Administration > Operations > Solution Management**

*MOSS 2007 - Solution Management*

In the Solution Properties window, click **cardiologtrackingagentfeature.wsp** and verify that the solution was successfully deployed to all web front ends.

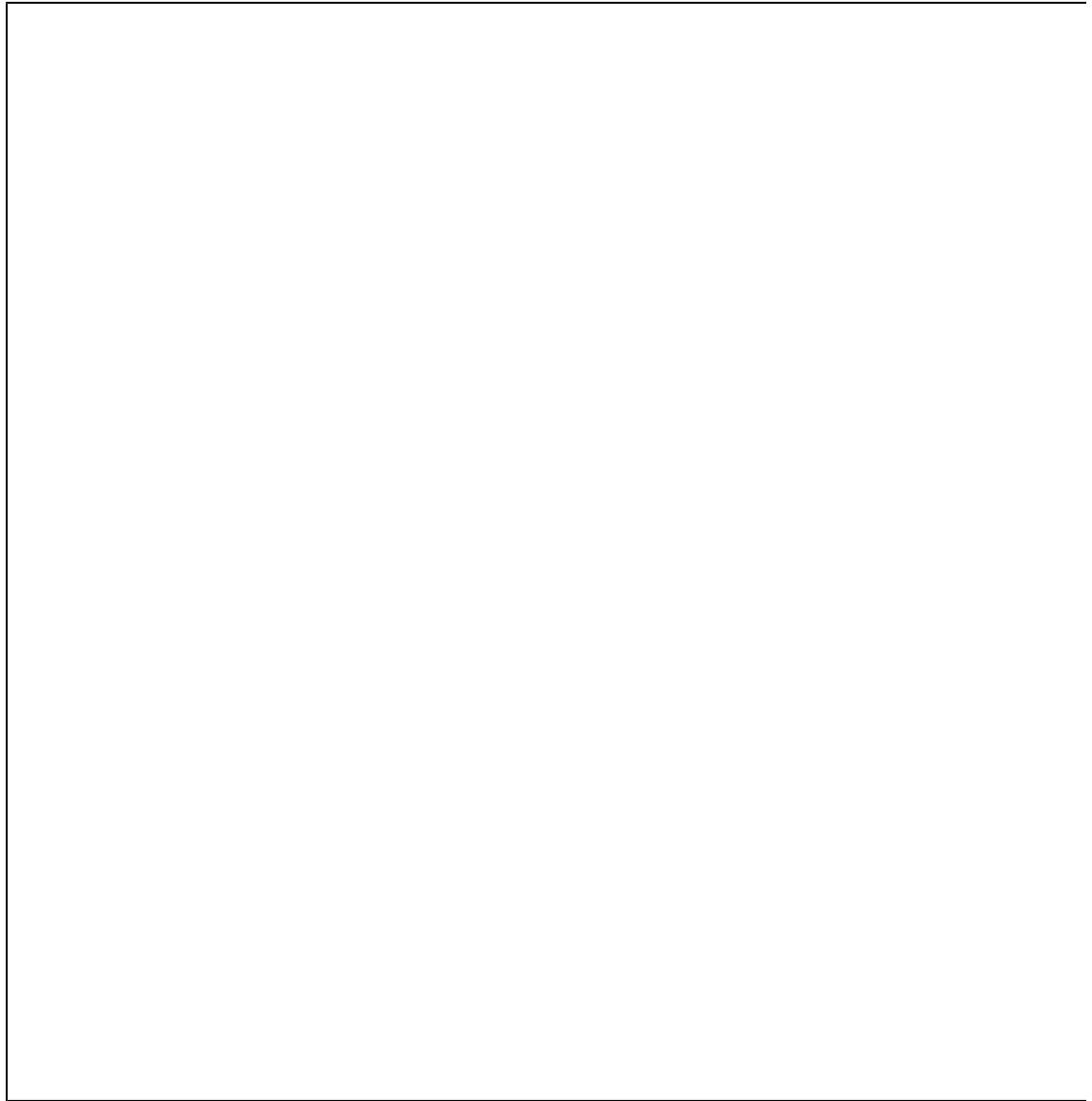
*MOSS 2007 - Solution Properties*

**Activate/Deactivate Data Collection**

The CardioLog Analytics feature is automatically activated and starts data collection immediately upon installation. The CardioLog Analytics solution may also be manually deactivated and reactivated.

**Warning:** *Deactivating the solution will stop all data collection until reactivated.*

To deactivate the CardioLog Analytics feature go to **SharePoint Central Administration > System Settings > Manage farm features**



*SharePoint Central Administration - Manage farm features*

To deactivate the CardioLog Analytics feature in **SharePoint 2010**, go to **Central Administration > System Settings > Manage farm features**

To deactivate the CardioLog Analytics feature in **MOSS 2007**, go to **Central Administration > Operations > Manage farm features**

*MOSS 2007 - Manage farm features*

**Note:** The CardioLog Analytics SharePoint Feature will work only for master pages which contain the following control in the head section:

```
<SharePoint:DelegateControl runat="server" ControllId="AdditionalPageHead" AllowMultipleControls="true"/>
```

This control is included in the master pages for all SharePoint templates, except the MOSS 2007 Publishing Site master page. Add this control to all MOSS 2007 Publishing Site master pages, right before the closing </HEAD> tag. Alternatively, you can also use a top master file, which is included in all of the Publishing Sites master pages, in order to perform a single update.

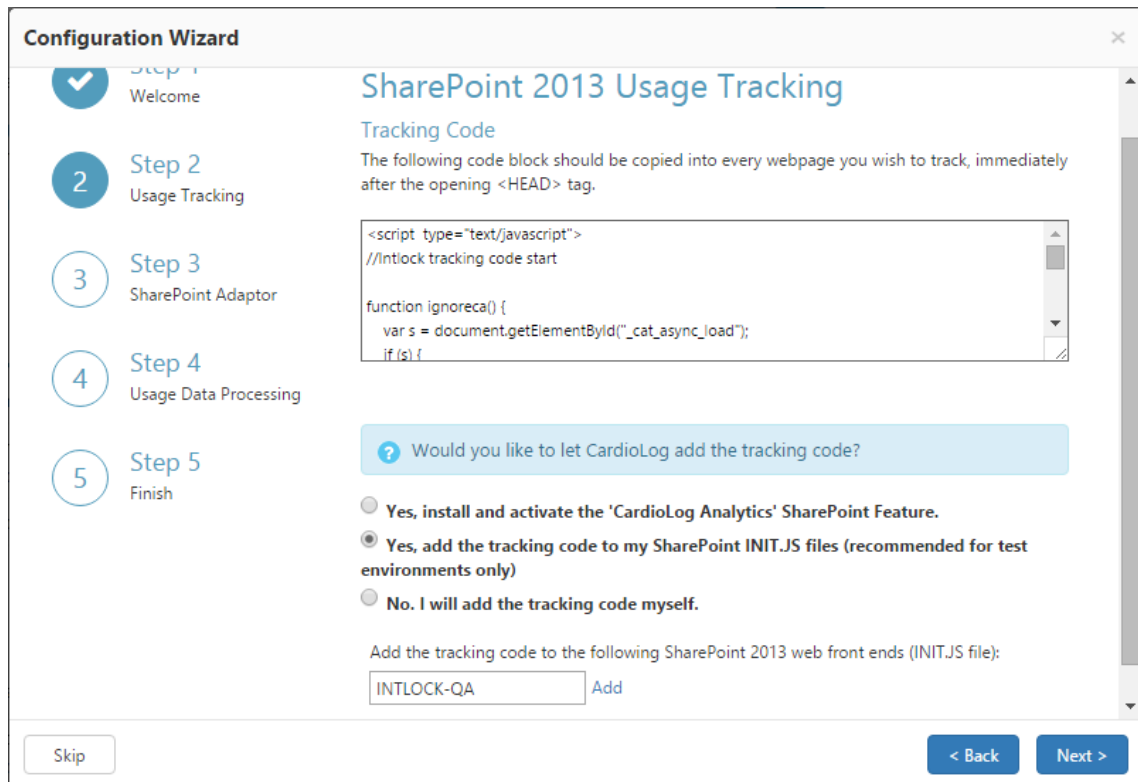
**(2) Automatically add the JavaScript tracking code**

**Notes:** This step should be done for each WFE. The CardioLog service account must have write permissions to the SharePoint template directory:

- [SharePoint 2016 Server]%PROGRAMFILES%\Common Files\Microsoft Shared\web server extensions\16\TEMPLATE
- [SharePoint 2013 Server]%PROGRAMFILES%\Common Files\Microsoft Shared\web server extensions\15\TEMPLATE
- [SharePoint 2010 Server]%PROGRAMFILES%\Common Files\Microsoft Shared\web server extensions\14\TEMPLATE
- [SharePoint 2007 Server]%PROGRAMFILES%\Common Files\Microsoft Shared\web server extensions\12\TEMPLATE

- i. In the **Usage Tracking** dialog, select "Yes, add the tracking code to my SharePoint INIT.JS files" and enter the SharePoint WFE server names, to allow CardioLog to automatically add the tracking code to all SharePoint pages served by the all the WFEs in your farm (the tracking code is added to init.js in SharePoint 2010, SharePoint 2013 and SharePoint 2016, and core.js in SharePoint 2007).

**Note:** If your SharePoint website runs on SSL, you will have to create a certificate for the CardioLog website and configure it to enable SSL. See [how to configure the Tracking Agent with SSL](#) for more details. Alternatively, you can install the [CardioLog Analytics SharePoint Feature](#).



Step 2 - Usage Tracking Installation Options

- ii. Enter the WFE server names and click on **Add**.
- iii. Click **Next** to continue.

### (3) Manually Add a JavaScript tracking Code

If you wish to add the tracking code yourself - select "No, I will add the tracking code myself." and copy the JavaScript tracking code to a common page component of your choice, including master pages, page toolbars, Web Parts, headers or footers. If you choose a common JavaScript (.js) file, verify you have removed the opening and closing <script> tags, or you will not be able to correctly collect usage data.

4. Click **Next** to continue, which will start the event collection test.
5. In order to verify that your SharePoint pages are tracked, follow these steps:
  - a. Open a new browser window and click **Next Step**.
  - b. Delete your browser temporary internet files and click **Next Step**.
  - c. Browse 3 pages on your SharePoint Online website and click **Next Step**.
  - d. Click **Test Event Collection**. The Wizard will now verify usage events tracking.

**Configuration Wizard**

## SharePoint 2013 Usage Tracking

✓ The 'CardioLog Analytics' SharePoint Feature has been installed and activated successfully.

**In order to test event collection, follow the instructions below:**

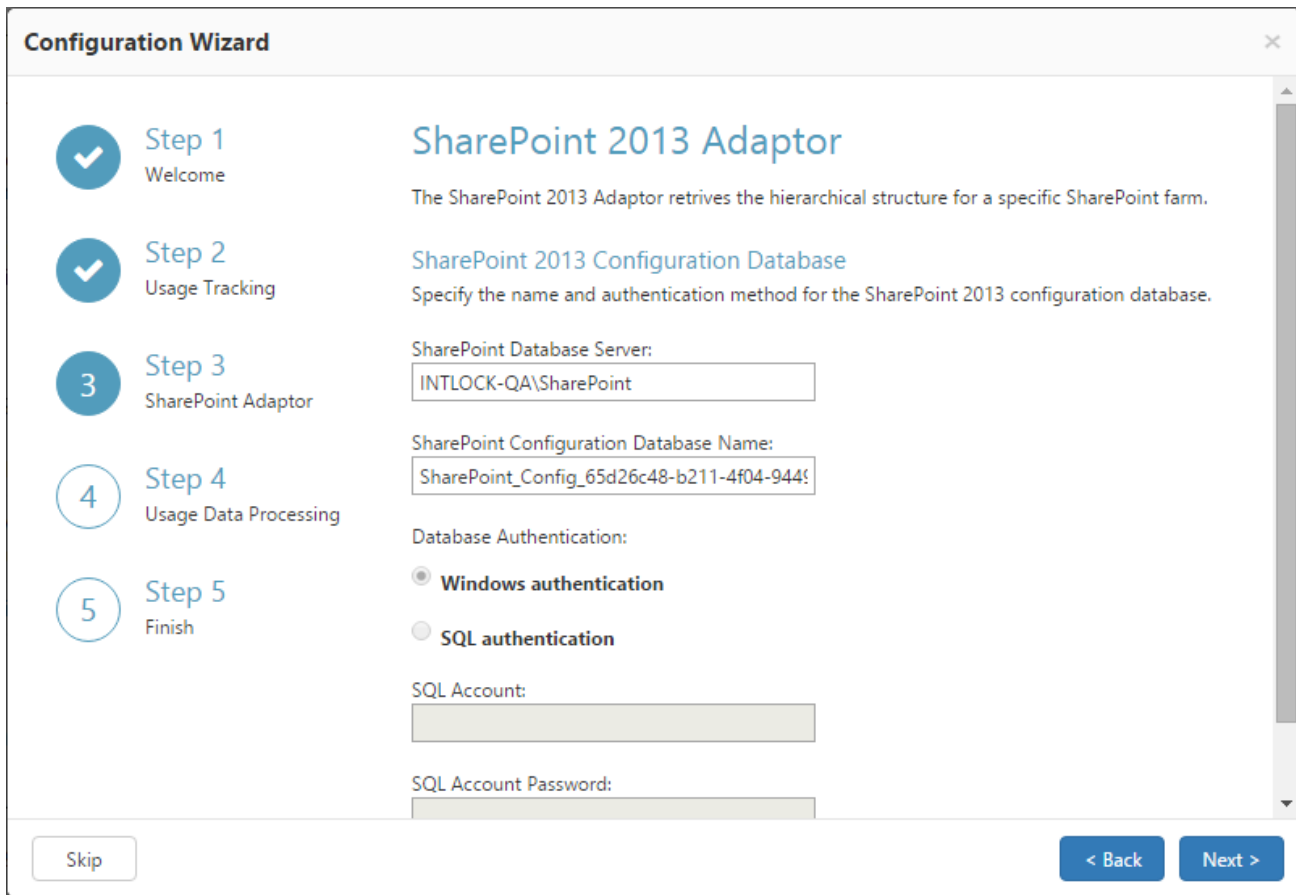
- ✓ Open a new browser window.
- ✓ Delete your browser temporary internet files. In Internet Explorer, click Tools > Internet Options > Delete > Temporary Internet files.
- ✓ Browse 3 pages on your SharePoint website.
- 4 [Test Event Collection](#)

< Back    Next >

#### Step 2 - Usage Tracking

Otherwise,

- a. Navigate to your SharePoint Online site homepage with Internet Explorer, Chrome, or FireFox.
  - b. Press Ctrl+F5 to clear the cache and reload the page.
  - c. While on the SharePoint website page, click Ctrl+F12. The tracking agent console should pop-up, displaying the ID number for the most recent monitored action (event). To close the console, press Ctrl+F12.
6. In the **SharePoint Adaptor** dialog, enter the SQL server instance name and the SharePoint configuration database name for your farm. Specify the authentication method used to connect to the database, then click **Next**.  
**Note:** Please confirm that the CardioLog service account has read permissions (data reader) for all SharePoint configuration and content databases.

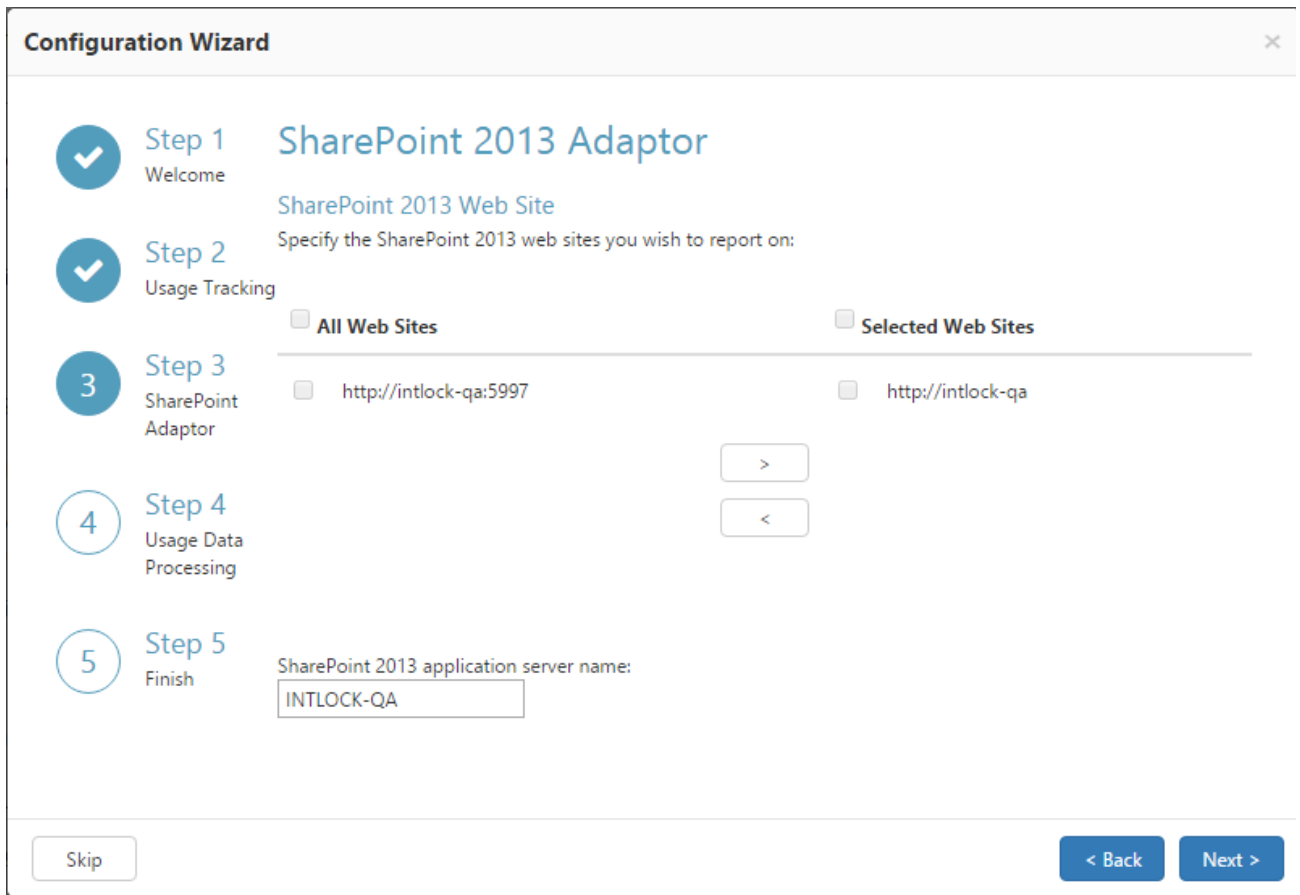


*Step 3 - SharePoint Adaptor*

7. In the **SharePoint Adaptor** dialog, select the SharePoint website(s) you would like to report on.
8. Enter the name of one of your SharePoint Web Front Ends, then click **Next**.

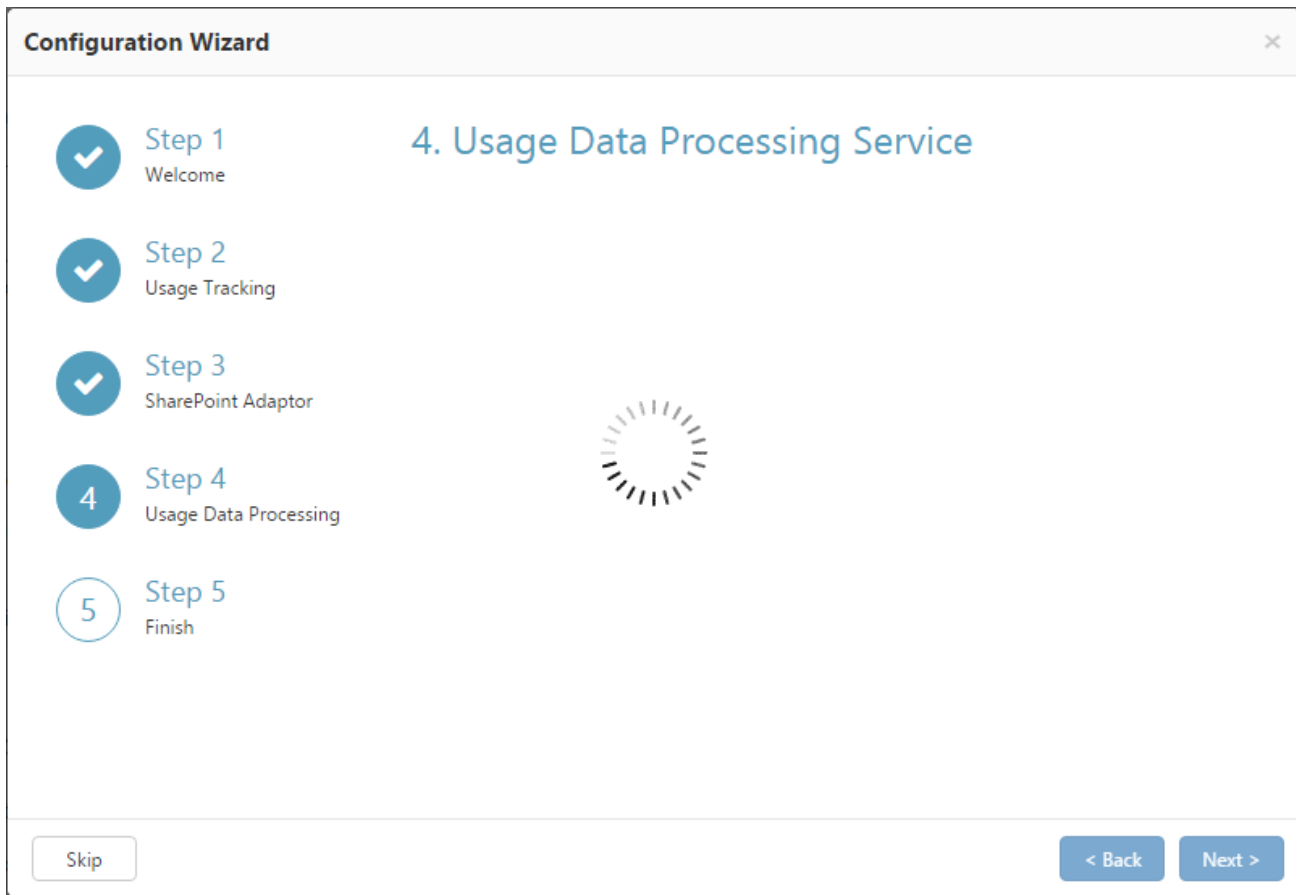
**Note:** Loading your SharePoint tree structure may take several minutes, depending on the number of items in the selected web sites.





Step 3 - SharePoint Adaptor Web Site Selection

9. In the **SharePoint Adaptor** dialog, expand the web site tree and verify that it shows your desired SharePoint web application, then click **Next**.
10. In the **Usage Data Processing** dialog, wait until the CardioLog Scheduling has activated, then click **Next**.



*Configuration Wizard Step 4 - Usage Data Processing*

11. In the **Finish** dialog, you should be created with a confirmation that everything has been properly configured, and then you can click **Finish**. Click **Show Raw Usage Data** to view the usage events collected thus far. All data will be available in reports within the next hour.

**Configuration Wizard** ×

- ✓ Step 1  
Welcome
- ✓ Step 2  
Usage Tracking
- ✓ Step 3  
SharePoint Adaptor
- ✓ Step 4  
Usage Data Processing
- 5 Step 5  
Finish

## Finish

✓ Congratulations! You have completed the configuration of CardioLog. Reports will be available in the next rounded hour - at 12:00 PM.

[Show Raw Usage Data \(50 rows\)](#)

< BackFinish

*Configuration Wizard - Finish*

12. Assign [roles](#) for users to grant access to CardioLog.
13. Configure email alerts for [scheduled services and event collection](#) thresholds that will be sent to the administrator in case of system failure.
14. Configure the [Active Directory Update Service](#) in order to segment authenticated visitors by their user names and their groups.